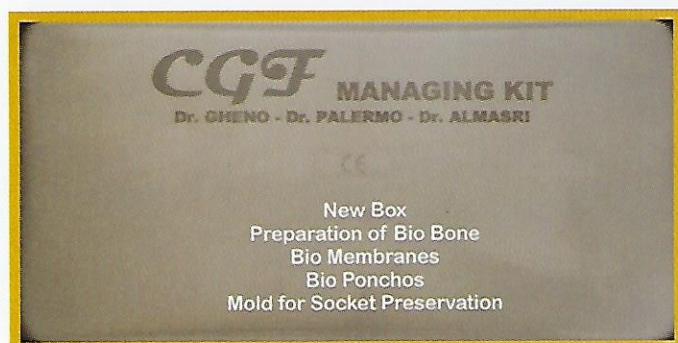


Managing Kit - CGF BOX

The result of reaserch of global excellence team

Dr. Ezio Gheno – Dr. Andrea Palermo – Dr. Maher Almasri



Box for processing CGF (Concentrated Growth factors)

In this box there is all you need for the various preparations that can be obtained from CGF:

Mold for Socket Preservation (BIO SOCKET MEMBRANE)

With a dedicated mold, in special form to compact the mononuclear cells in the lower part. During the formation of the concentrate in the mold the thrust is : diameter 8mm thrust cylinder 14gr , diameter 11mm thrust cylinder 24gr for a slow and gradual reduction of serum.

Photos Socket Preservation 1, 6.

CGF membranes (BIO MEMBRANES).

Buffer from 250gr to 280gr max boost pressure with a shape no sharp cross-cut for a better release of growth factors.

Photos membranes 7,10.

Ponchos (BIO PONCHO)

With a dedicated special mold.

Photos Poncho 11,13.

CGF Bone (Sticky Bone) & (BIO BONE)

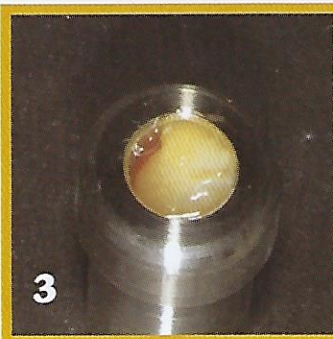
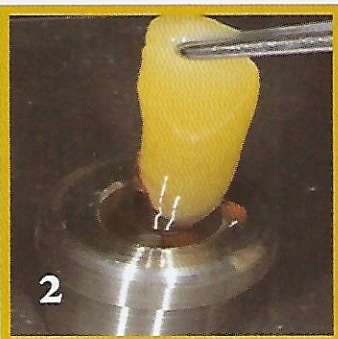
Glass dappen in material borosilicate, class 3.

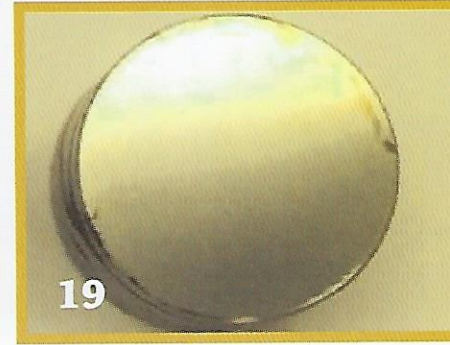
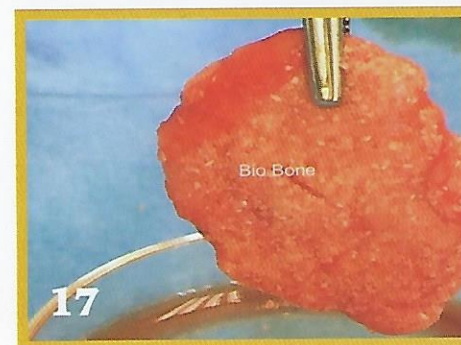
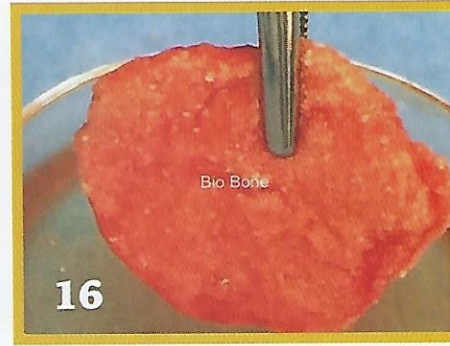
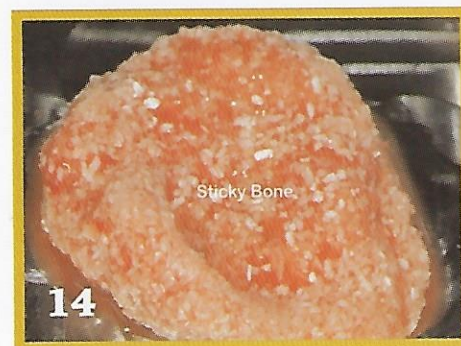
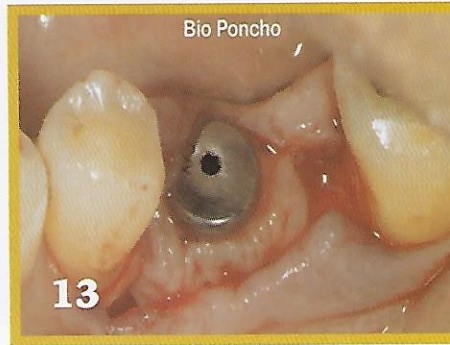
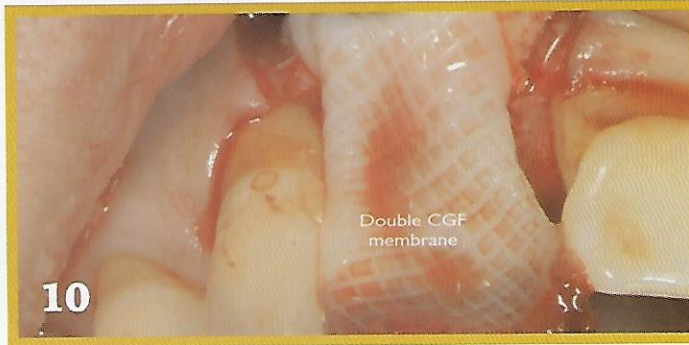
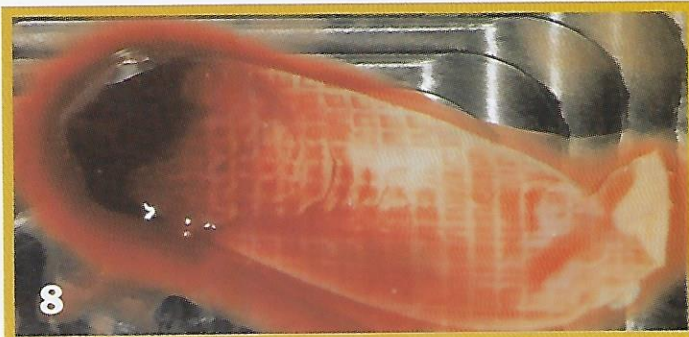
Photos Sticky Bone & Bio Bone 14,17.

Pot for Hydration/ Permeation with LPCGF (CGF Liquid preparation).

The material of the box' components is of great importance. **This stainless steel is resisting high mechanical stresses and abrasive or corrosive environments.** Comparison between standard stainless steel and special stainless steel (Silfradent). Photo corrossion 18,19.

These microstructural characteristics, also allow it to maintain a more constant intrinsic temperature, not to suffer contamination by external agents, and to remain indifferent to electrostatic charges or magnetic fields.





silfradent

®

Silfradent S.r.l.

Via G. Di Vittorio 35/37

47018 S. Sofia (FC) – ITALIA

tel. +39 0543.970684

www.silfradent.com